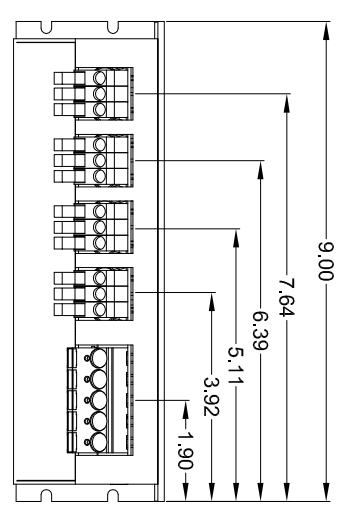
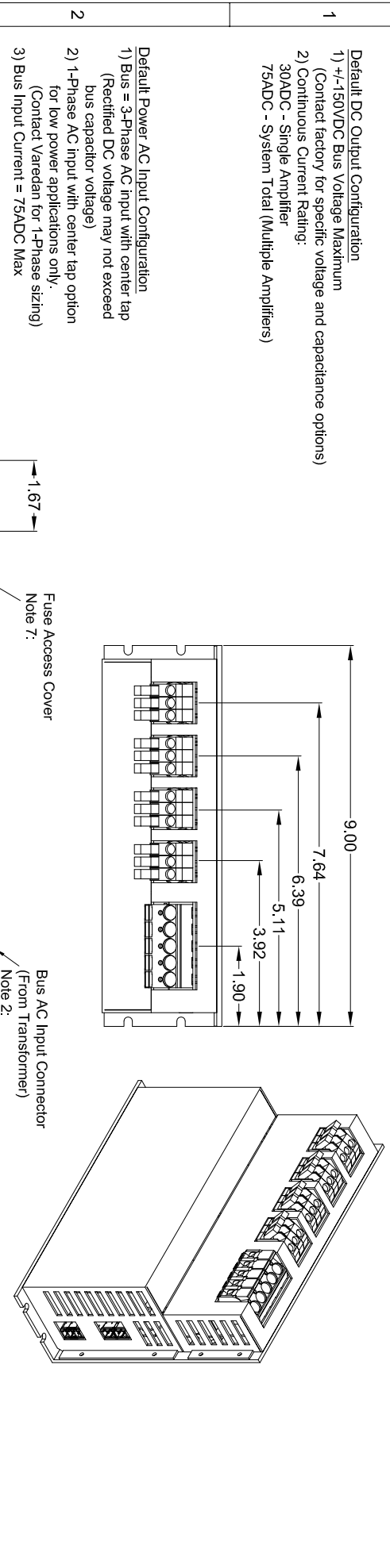
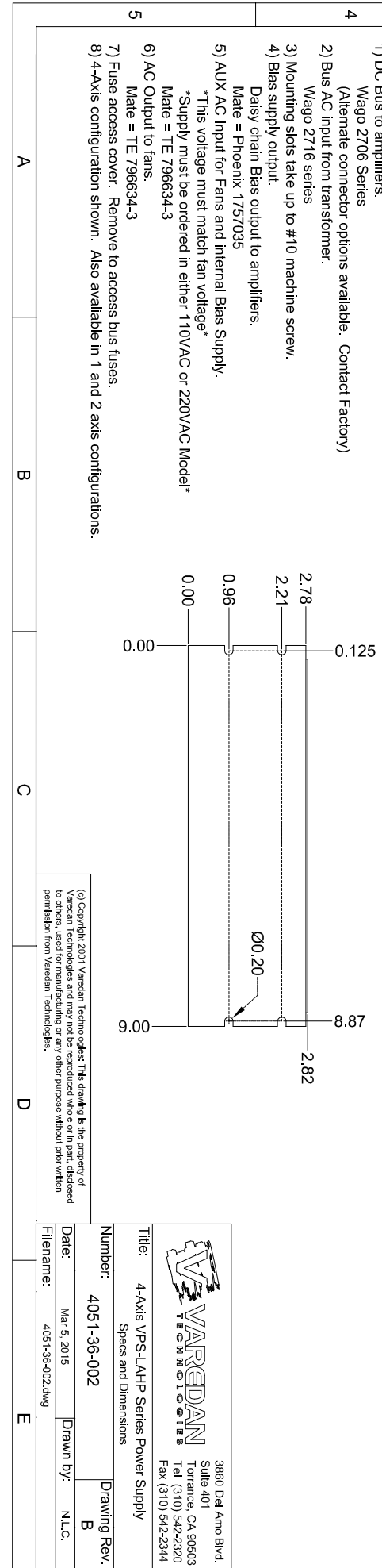
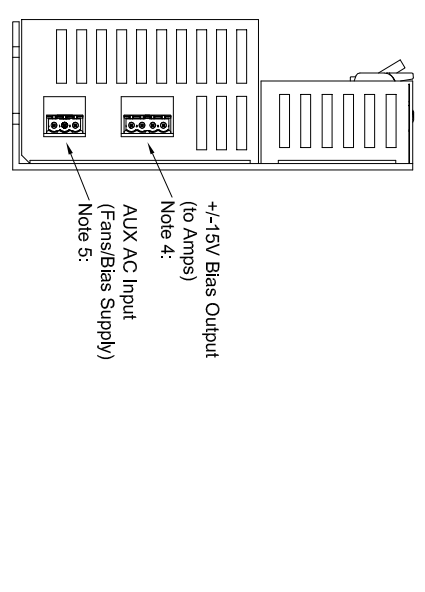
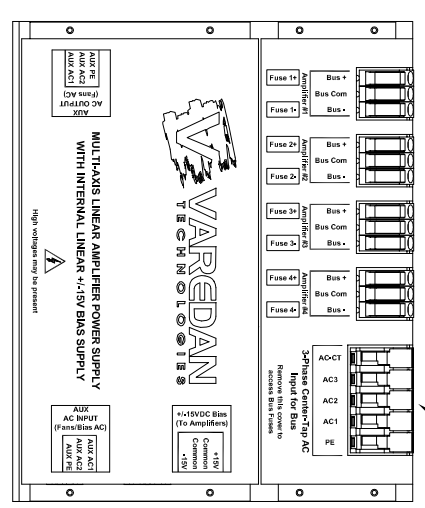
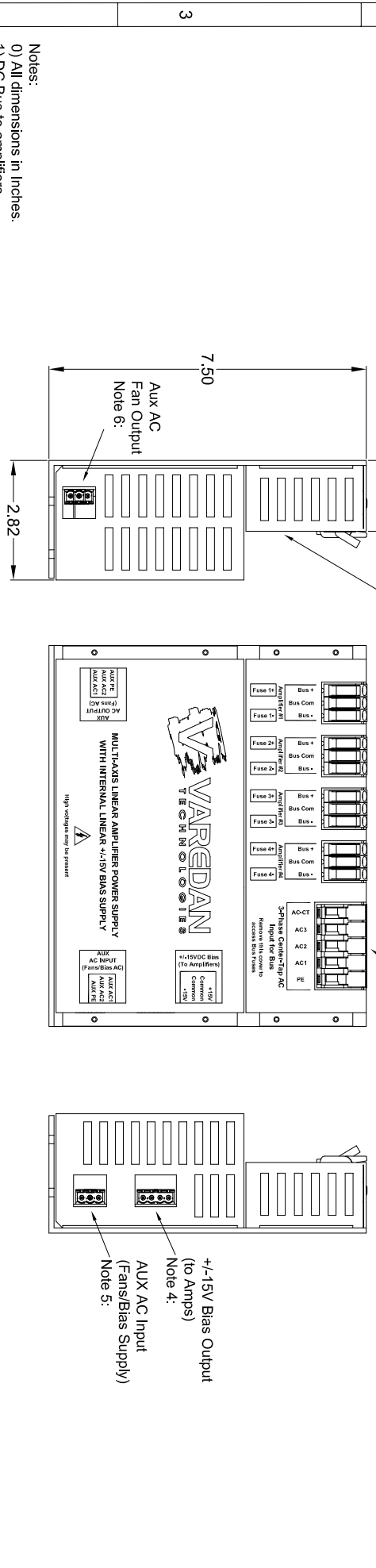


REV	DESCRIPTION	DATE	APPROVED
A	Original release.	3-9-15	
B	Changed continuous current rating per amplifier to 30A	11-11-15	



Fuse Access Cover
Note 7:

Bus AC Input Connector
(From Transformer)
Note 2:



Notes:


- All dimensions in inches.
- DC Bus to amplifiers.
Wago 2706 Series
(Alternate connector options available. Contact Factory)
- Bus AC Input from transformer.
Wago 2716 series
- Mounting slots take up to #10 machine screw.
- Bias supply output.
Daisy chain Bias output to amplifiers.
Mate = Phoenix 1757035
- AUX AC Input for Fans and Internal Bias Supply.
This voltage must match fan voltage
Mate = TE 796634-3
Mate = TE 796634-3
- AC Output to fans.
Mate = TE 796634-3
- Fuse access cover. Remove to access bus fuses.
- 4-Axis configuration shown. Also available in 1 and 2 axis configurations.

Default DC Output Configuration

- +/-150VDC Bus Voltage Maximum
(Contact factory for specific voltage and capacitance options)
- Continuous Current Rating:
30ADC - Single Amplifier
75ADC - System Total (Multiple Amplifiers)

Default Power AC Input Configuration

- Bus = 3-Phase AC input with center tap
(Rectified DC voltage may not exceed bus capacitor voltage)
- 1-Phase AC input with center tap option
for low power applications only.
(Contact Varedan for 1-Phase sizing)
- Bus Input Current = 75ADC Max


VAREDDAN
 TECHNOLOGIES

3860 Del Amo Blvd.
 Suite 401
 Torrance, CA 90503
 Tel (310) 542-2320
 Fax (310) 542-2344

Title: 4-Axis VPS-LAHP Series Power Supply
 Specs and Dimensions

Number: 4051-36-002
 Drawing Rev. B

Date: Mar 5, 2015
 Drawn by: N.L.C.

Filename: 4051-36-002.dwg