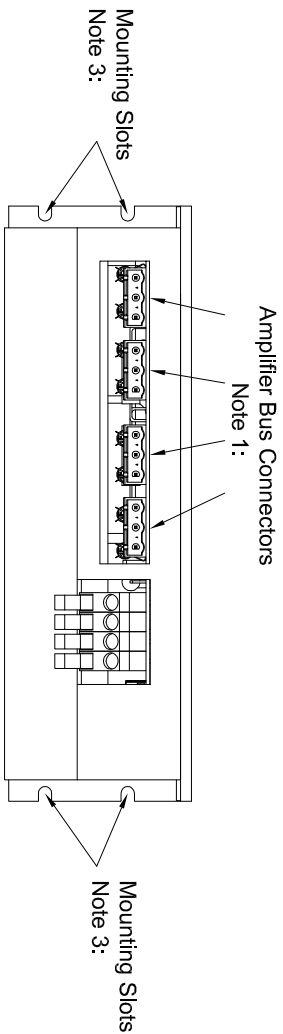
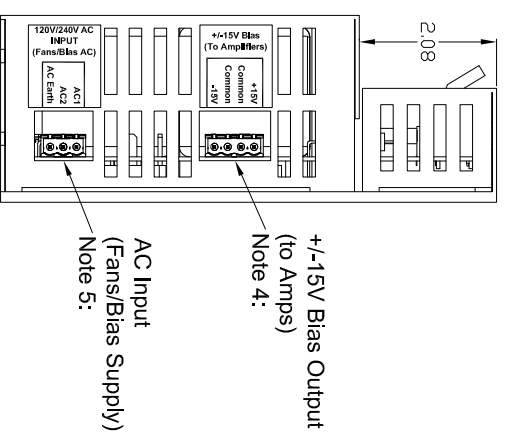
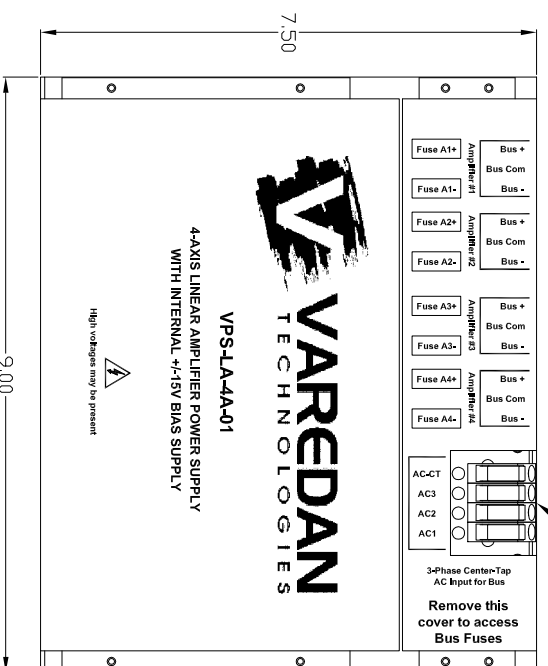
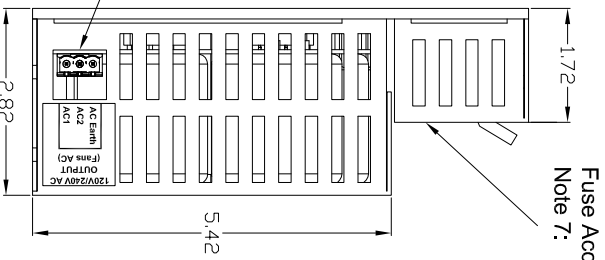


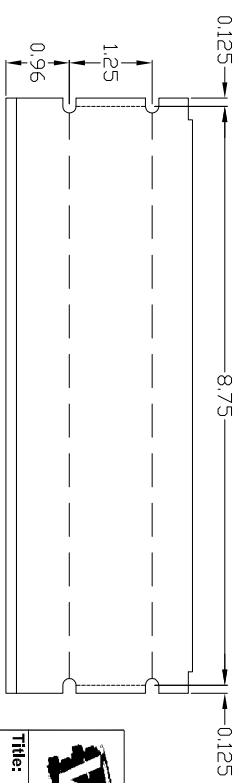
- DC Output Configuration**  
(Contact factory for voltage options)
- 1) DC Output Voltage:  
Up to +/-150V options available
  - 2) Current (per Amplifier Output):  
10A Continuous  
25A Peak



- Default AC Input Configuration**
- 1) 3-Phase AC Input with center tap  
(Rectified DC voltage may not exceed  
Max DC Output Voltage of configuration)
  - 2) 1-Phase AC Input with center tap option  
for lower power applications only.
  - 3) Input Current = 42ADC Max per Terminal



- Notes:**
- 0) All dimensions in Inches.
  - 1) DC Bus to amplifiers.  
Mate = OnShore EDZ960/3
  - 2) Bus AC Input from transformer.  
Default = Wago 2706-104  
Alternate connector options available. Call Factory.
  - 3) Mounting slots take up to #10 machine screw.
  - 4) Bias supply output.  
Daisy chain Bias output to amplifiers.  
Mate = Phoenix 1757035
  - 5) 110/220V AC Input for Fans and Internal Bias Supply.  
\*This voltage must match fan voltage\*
  - 6) AC Output to fans.  
Mate = TE 796634-3
  - 7) Fuse access cover. Remove to access bus fuses.



**VAREDDAN** TECHNOLOGIES

3870 Del Amo Blvd.  
Suite 503  
Torrance, CA 90503  
Tel: (310) 542-2320  
Fax: (310) 542-2344

**Title:** 4-Axis Linear Amp Power Supply  
Internal +/-15V Bias Supply

**Part Number:** 4026-36-002

**Date:** July 5, 2013  
**Drawn by:** N.L.C.

**Filename:** 4026-36-002.DWG  
**Sheet:** 1 of 1

(c) Copyright 2001 Varedan Technologies. This drawing is the property of Varedan Technologies and may not be reproduced whole or in part, disclosed to others, used for manufacturing or any other purpose without prior written permission from Varedan Technologies.